

CE70 AIR CORE DRILLING

2020 CATALOGUE

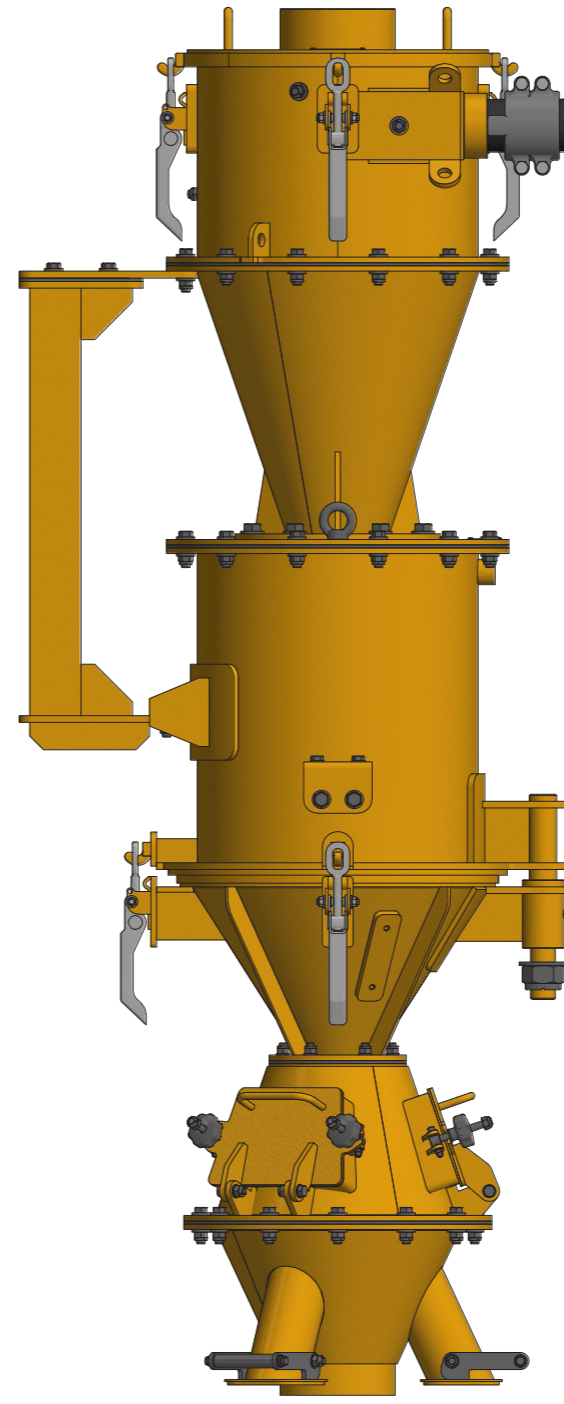


ROCKWELL
DRILLING TOOLS

www.corporaal.com.au



Drill sampling technologies
700CFM rotary cone sample system - TS-02



4 Bolt dixon hose clamp - I5386-62

2" Speculator sample hose - P3525-63

2" Deflector box - P3555-62

CE70 Blow down - M5387-62

CE70 Sample swivel - M5388-62

Air core compact rotary head - M2788-62

Conversion sub

CE70 Air swivel - M4442-62

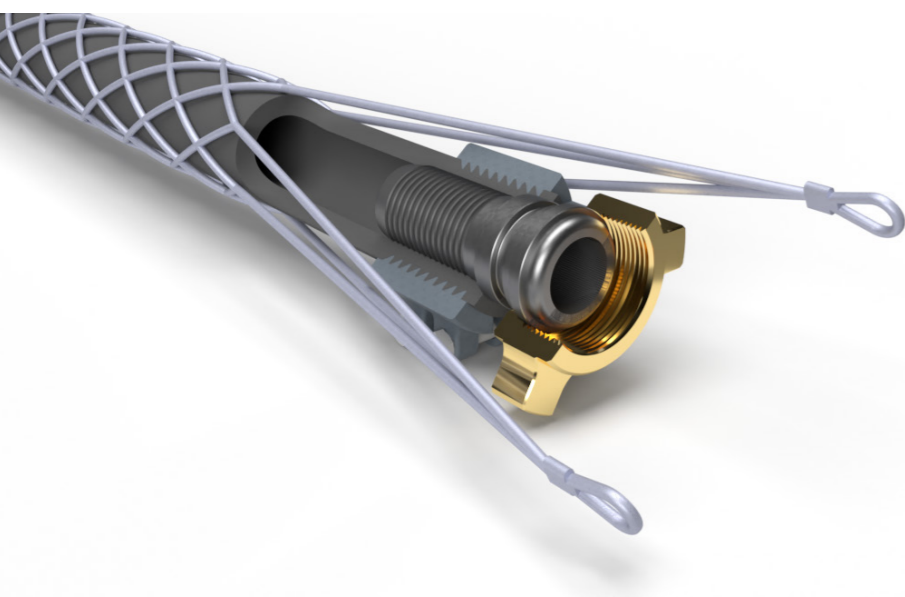
Head tube lock sub

CE70 Drill rod (3m) - M3992-62

CE70 Bit adapter sub- M5389-62

CE70 Air core bit- M4010-62





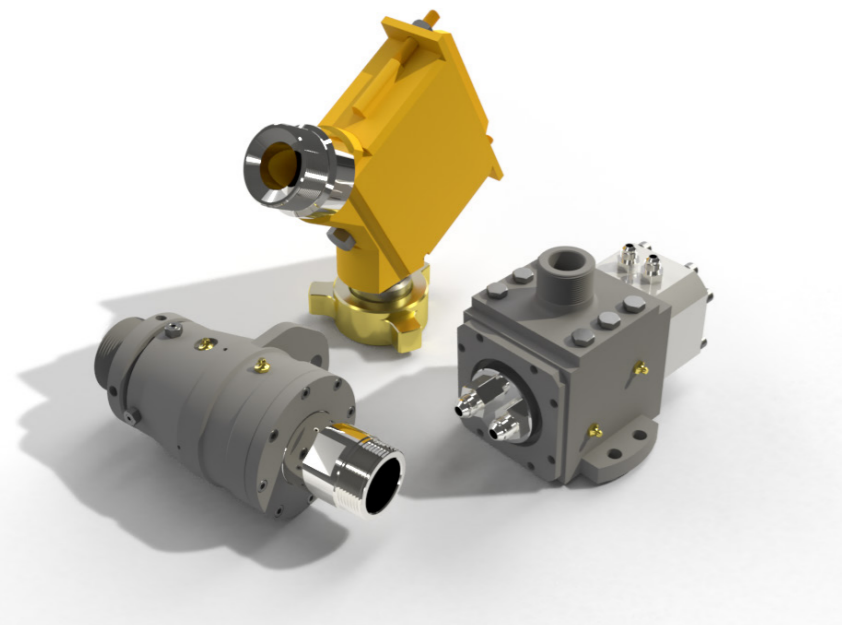
HOSE ASSEMBLY

All our RC & air core hose fittings are manufactured from high tensile steel. The hose tails are hardened for maximum wear resistance and the knock on nut threads are zinc phosphate coated for increase thread life. We supply only the highest quality sample hose, hose clamps & hose socks available on the market, so you can rest assure that when you deal with us your getting nothing but the best.

2" HOSE ASSEMBLY OPTIONS

Part No.	Description
P3556-64	2" HOSE TAIL
P3559-64	2" KNOCK ON NUT, DIXON FINE
P5466-64	2" KNOCK ON NUT, DS COARSE
I5386-62	2" B29 DIXON HOSE CLAMP , 4 BOLT
P3558-64	2" WELD ON SPUD, DIXON FINE
P5467-64	2" WELD ON SPUD, DS COARSE
P3525-63	2" SPECULATOR HARD WALL SAMPLE HOSE (15M)
P3560-64	SINGLE END, TWO EYE HOSE SOCK
P5468-64	*FULL LENGTH (15M) DOUBLE END, TWO EYE (EACH END) HOSE SOCK.

*Made to order



ABOVE HEAD ASSEMBLY

The above head assembly consists of the deflector unit, blow down system and sample swivel. All these items have been tried and tested in the field with great results. Unique in there design, there is no substitute for the CE70 range of above head equipment.

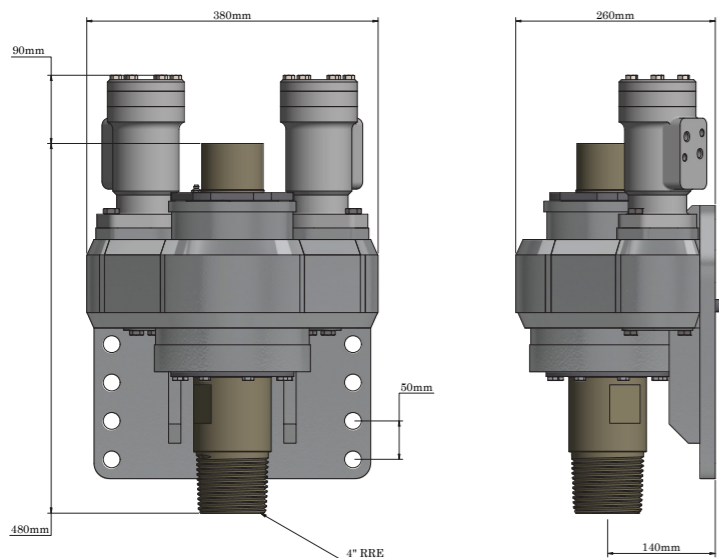
ABOVE HEAD ASSEMBLY

Part No.	Description	Features
P3555-62	2" DEFLECTOR BOX	Manufactured form high tensile steel & can be fitted with either a bisalloy or ceramic wear tile
M5387-62	CE70 BLOW DOWN SYSTEM	Unique design blow down system. Completely sealed piston for maximum air pressure with no bypass. Made from high tensile steel & a heat treated piston
M5388-62	CE70 SAMPLE SWIVEL	This top entry swivel takes 32NB pipe (Ø37mm bore). Optimum sample flow. Highly durable Parker hydraulics seals

ROTARY HEAD

Corporaal Enterprises offers a range of rotary heads for rigs of any size. We manufacture heads for water well, Geo-technical, diamond and air core drilling applications.

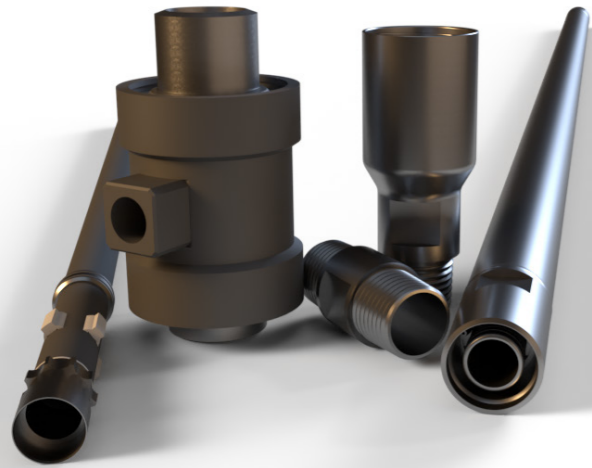
Our compact rotary head, this head comes in a 2:1 & 3:1 power ratio. Depending on preference or requirements. This chart shows the more common 2:1 ratio used in an air core application.



WHITE HB125

COMP HEAD 2:1

FLOW IN GPM	PRESSURE IN PSI						lb-ft - rpm	EFFECIENCY
	1000	1500	2000	2500	3000	3500		
8	316 - 60	493 - 59	675 - 57	383 - 54	1008 - 51	1156 - 49	70-100%	
12	301 - 99	491 - 89	658 - 87	824 - 85	995 - 82	1159 - 79	40-69%	
16	296 - 120	473 - 120	656 - 118	847 - 118	996 - 111	1153 - 107	0-39%	
20	280 - 150	453 - 149	640 - 149	804 - 146	980 - 141	1143 - 137		
24	246 - 180	435 - 179	610 - 179	787 - 175	971 - 171	1197 - 154		
28	242 - 210	431 - 209	600 - 209	792 - 207	978 - 201	1235 - 170		
32	203 - 237	495 - 232	585 - 220	762 - 208	965 - 192	1140 - 171		
36		568 - 539	631 - 249	820 - 236	1063 - 219	1137 - 192		
40		605 - 289	721 - 284	856 - 269	1013 - 253	1202 - 227		
44		445 - 320	594 - 312	766 - 299	944 - 282			
48		250 - 353	445 - 343	643 - 331	839 - 311			
50		232 - 368	409 - 362	618 - 347	796 - 335			



BELOW HEAD ASSEMBLY

All our subs and drill rods are manufactured from heat treated 4140 steel for maximum strength & life.

The set up shown in this brochure is our CE70 product line. CE70 subs and rods are machined with a dual start thread that prevents over torquing while drilling making rod changes or tripping easier and more cost effective

BELOW HEAD ASSEMBLY		
Part No.	Description	Features
-	ADAPTOR SUBS & HEAD TUBES	We can build an off the shelf system or customize to suit your rigs needs. See our RDT rod catalogue for all threading options
M4442-62	CE70 ENDURO AIR SWIVEL	Twin hardened seal rings and four rotary seals specifically designed to maximize the service life. 250 RPM - 600 CFM @ 500 PSI
M3992-62	CE70 Drill rod (3m)	We offer two variations of inner tube sealing styles, either traditional o-rings or Polyurethane-ULTRA. Polyurethane-ULTRA seals last longer, are easier to fit and are wont come loose during rod changes.



BITS

Our bits are built from high tensile heat treated 4140 for maximum tool life. These bits come standard as three or four blades but can be manufactured in any configuration on request. There are a selection of bits to suit different ground conditions so be sure to talk with a rep before making your purchase

BITS		
Part No.	Description	Features
M4010-62	CE70 FACE DISCHARGE No. 1	SOFT GROUND
M5539-62	CE70 FACE DISCHARGE No. 2	MEDIUM GROUND
M5540-62	CE70 FACE DISCHARGE No. 3	HARD GROUND
M4529-62	CE70 VACUUM No. 1	SOFT GROUNDS/FRACTURED CLAYS
M4530-62	CE70 VACUUM No. 2	SOFT GROUNDS/FRACTURED CLAYS
M5541-62	CE70 KIT BIT	HEAVY CLAYS

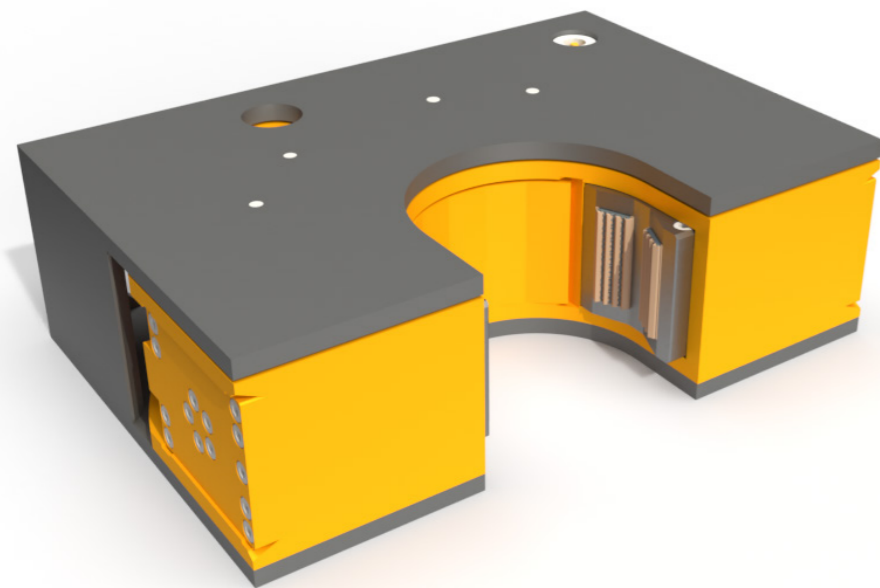
All bits come with a selection of different trumpets for various ground conditions

COMPACT BREAKOUTS

Our range of compact breakouts are ideal for air core rigs. We make both swing in and mast in mount breakouts to suit your rigs limitations.

Featured here is the Eagle grip breakout which come in either a single or a dual breakout or if you are very limited with room we have the solution there too. The Razorback breakout is a slimline, light weight but powerful breakout tool unlike anything on the market

BREAKOUTS		
Part No.	Description	Features
M3609-62	EAGLE GRIP DUAL	50° Rotation, 7.6 tonne clamp, 15.5 k-nm torque
M3608-62	EAGLE GRIP SINGLE	25° Rotation, 7.6 tonne clamp, 15.5 k-nm torque
M3599-62	2-8 RAZORBACK	Clamp 7 tonne, 16 k-nm torque, weight 33kgs



World class air core products built to deliver results, reliability, and high performance.

TS-02

COMPACT
ROTARY SAMPLING SYSTEM

DST ensure all products from design to manufacturing hit all the necessary bullet points of a quality product

- THE BEST IN QUALITY
- SAFE TO USE
- SIMPLE TO OPERATE & MAINTAIN
- PRODUCES REPRESENTATIVE SAMPLES OF EQUAL WEIGHT
- INNOVATIVE
- DESIGNED IN CONJUNCTION WITH MINING COMPANIES, DRILLING CONTRACTORS AND RIG MANUFACTURERS

TS-02 Sampling System Specifications

Type: Rotary Sampling System (Compact)

Airflow Rating: <750 CFM

Sampling Conditions: Wet & Dry

No. of Sample Ports: 2 or 3

Sample Collection Type: Bag or Receptacle

Adjustment: Nominal 8% or Bolt on Blade (Optional)

Range of Adjustment : 4%, 6%, 8% & 10%

(Other Sizes Available Upon Request)

Overall Height: Approx. 2m

Mass (Complete): Approx. 260kg

Minimum Chute Discharge Angle: 60°

Sample Cone Base : 200mm

Sample I Duplicate Chute : 3" (all sample chutes)

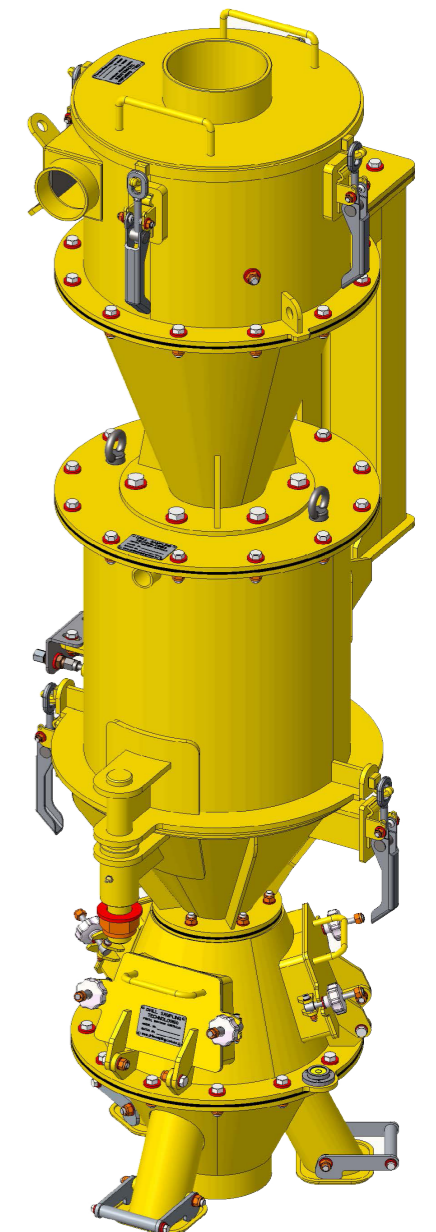
Waste Chute : 6"

Case Material: Mild Steel

(Externally Painted)

Sample Cone Material: Stainless Steel

Hydraulic Supply Requirements: 4.2 Litres / Min @ 180 Bar





ROCKWELL
DRILLING TOOLS

Phone - 1300 790 925

Phone international - +61 89409 7744

Email - sales@corporaal.com.au

www.corporaal.com.au