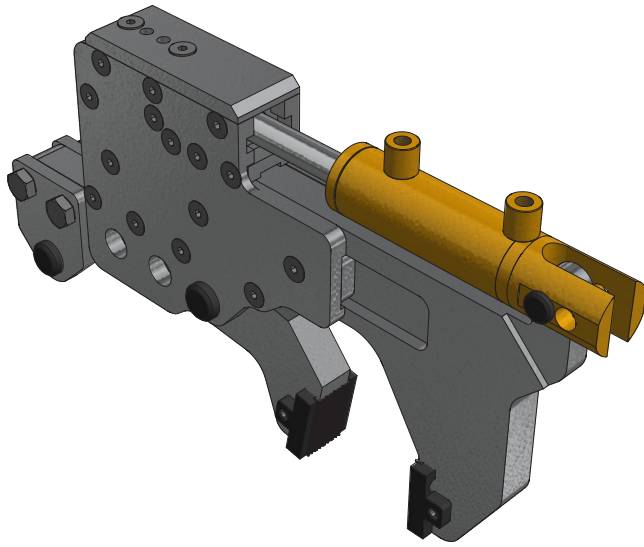


HYDRAULIC WRENCH



This hydraulic wrench is designed for drill rigs with restricted space that won't allow for other bulky breakout systems. Half the size & weight but with all the torque and clamping pressure of a conventional breakout, the Razorback wrench is ideal for any size rig but can also be utilized with breakout benches as an alternative to spanner tooling.

Manually swing in & self centralizing, this breakout wrench ideal for water well drill rigs, doing away with dangerous modified hand tools such as pipe wrenches fitted with hydraulic cylinders.

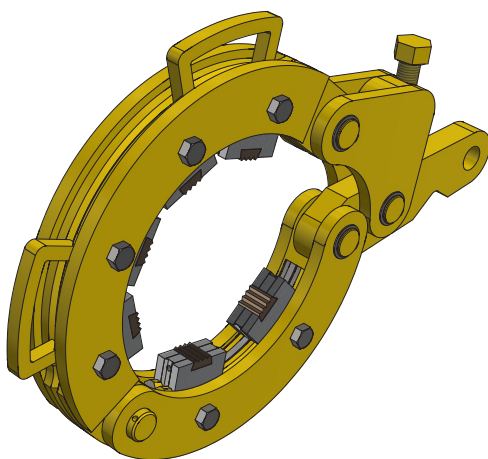
2-8 RAZORBACK WRENCH - M3599-62

MODEL	CLAMP ADJUSTMENT INCREMENTS	CLAMP RANGE	CLAMP FORCE	TORQUE	DIMENSIONS	ORDER CODE
2-8 RAZORBACK	52mm	2" TO 8"	20,900 LB.F 9.5 TONNE	11,800 LB.FT 16,000 Nm	46cm x 28cm x 6cm @ 33kg	M3599-62

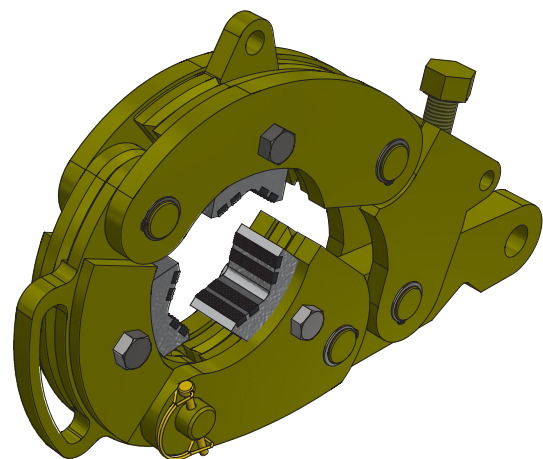
WRAP SPANNER

The Torque-Max spanner is an alternative to chain tong spanners with the added bonus of being more reliable, harder wearing & safer to operate. Suited for heavy duty applications due to the robust design & high tensile materials used for manufacturing the spanner.

The torque-max spanner is designed to stop any slippage. The over lever applies clamping force when the breaking motion begins, the more torque applied the higher the clamping pressure is.



10-12 TORQUE-MAX - M3622-64



4-6 TORQUE-MAX - M3197-62