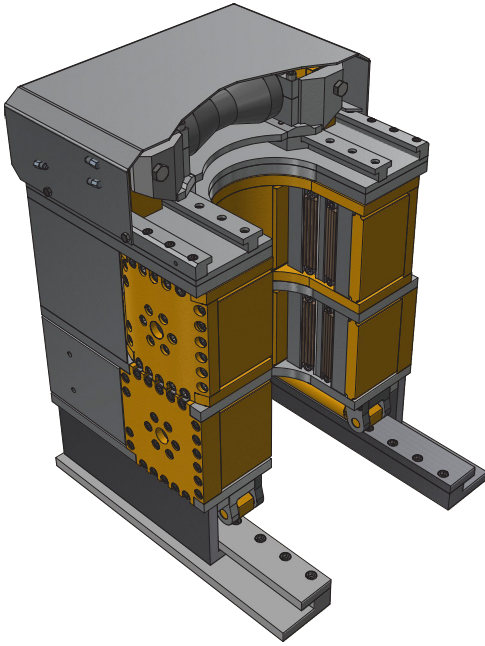


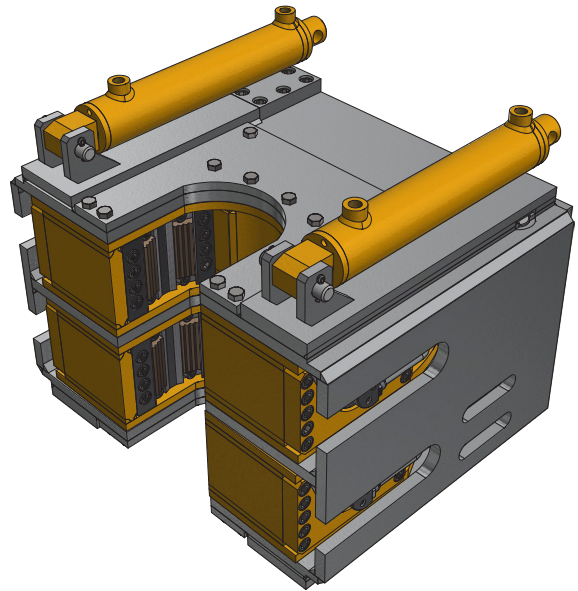


BREAKOUTS

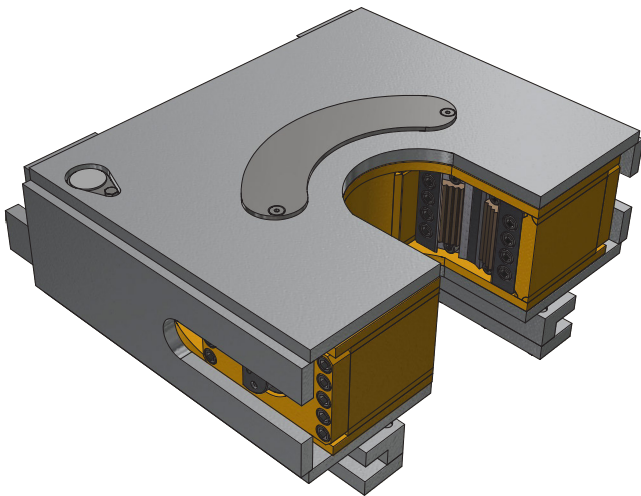
The Gorilla Grip breakout system is developed as an after market breakout to retro fit to Atlas DML, DM45 & DM50's with minimal modifications and due to its compact design and optional incorporated deck spanner and/or rod kicker this breakout is capable of being mounted into more then just atlas blast hole rigs.



GORILLA GRIP - M3200-62



DUAL ROTARY - M3141-62

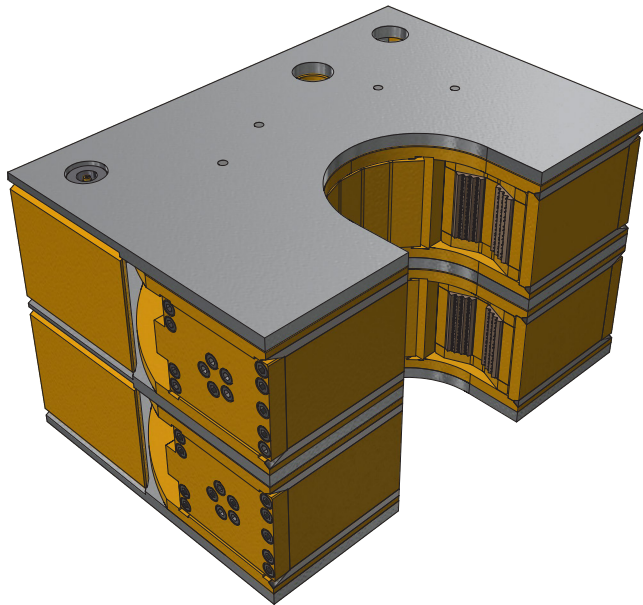


SINGLE ROTARY - M3918-62

The Dual Rotary Breakout System is an after market breakout designed to retro fit into T685 & T450 drill rigs with none to minimal modifications required. Fabricated from high tensile steel, these breakouts are light weight, compact and built to last. The dual rotation top and bottom clamps allows for 52° of rotation, a major advantage in breaking out drill string and hammers in one operation. this breakout is also available as a single unit.

MODEL	ROTATION	CLAMP RANGE	CLAMP FORCE	*TORQUE	DIMENSIONS	ORDER CODE
GORILLA GRIP	27°	4 ½" TO 8"	61,729 LB.F 28 TONNE	30,000 LB.FT 40,674 Nm	48.5cm x 49cm x 73cm	M3200-62
DUAL ROTARY	52°	4" TO 6"	38,581 LB.F 17.5 TONNE	27,583 LB.FT 37,398 Nm	55cm x 43cm x 37cm	M3141-62
SINGLE ROTARY	26°	4" TO 6"	38,581 LB.F 17.5 TONNE	27,583 LB.FT 37,398 Nm	55cm x 43cm x 17.5cm	M3918-62

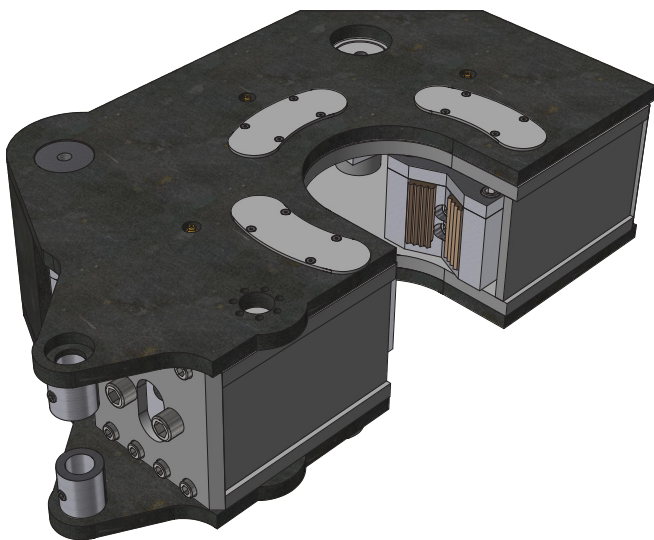
BREAKOUTS



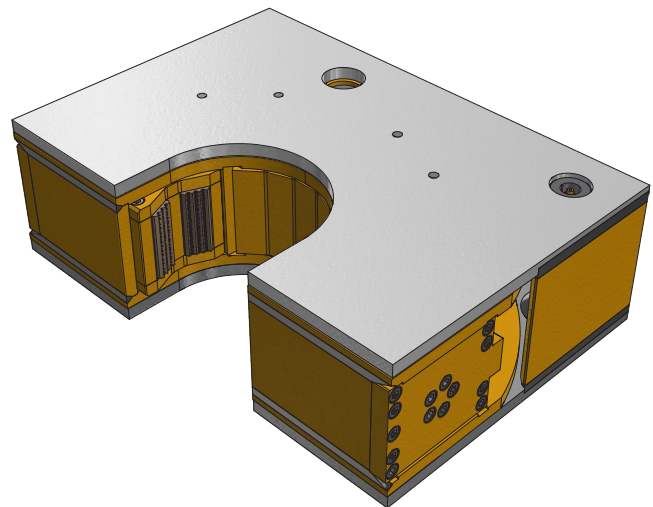
EAGLE GRIP DUAL - M3609-62

The Eagle Grip single & dual are light weight & compact breakout systems which can either be mounted inside the mast or as a swing in system. The breakout comes as a dual rotation unit with top and bottom rotating clamps giving 50° of rotation or as a single unit with single clamp and rotate.

This unit designed as a retro fit for UDR1200 model drill rigs as a mast in mount breakout, tramming into position from behind the drill line within the mast, keeping line of sight to the drill table free from obstructions.



BULL ANT SINGLE - M2927-62



EAGLE GRIP SINGLE - M3608-62

MODEL	ROTATION	CLAMP RANGE	CLAMP FORCE	*TORQUE	DIMENSIONS	ORDER CODE
EAGLE GRIP DUAL	50°	1.5" TO 6"	*11,300 LB.F 7.6 TONNE	*11,400 LB.FT 15,500 Nm	45cm x 30cm x 27cm	M3609-62
EAGLE GRIP SINGLE	25°	1.5" TO 6"	*11,300 LB.F 7.6 TONNE	*11,400 LB.FT 15,500 Nm	45cm x 30cm x 14cm	M3608-62
BULL ANT SINGLE	26°	2" TO 6"	33,674 LB.F 15.2 TONNE	9,126 LB.FT 12,373 Nm	70cm x 35cm x 19cm	M2927-62